

- REFERENCE NOTES**
- A. PAVEMENT DIMENSIONS ARE TO BACK OF CURB
 - B. BASELINE IS CENTRE LINE RIGHT-OF-WAY
 - C. PROPERTY LINES OBTAINED FROM CITY OF WINNIPEG L.B.I.S., AND NO SCALE FACTOR WAS APPLIED
 - D. REFER TO AECOM FIELD BOOK NO. 5038

- CONSTRUCTION NOTES**
1. REMOVE EXISTING CONCRETE AND ASPHALTIC PAVEMENT AND CONSTRUCT NEW ASPHALTIC PAVEMENT TYPE 1A (100mm)
 2. REMOVE EXISTING CONCRETE PAVEMENT AND CONSTRUCT NEW 150mm REINFORCED CONCRETE PAVEMENT
 3. CONSTRUCT NEW BARRIER CURB AND GUTTER (600mm WIDTH, 180mm HT.)
 4. CONSTRUCT NEW LIP CURB AND GUTTER (40mm HT. INTEGRAL)
 5. CONSTRUCT NEW MODIFIED BARRIER CURB AND GUTTER (600mm WIDTH, 180mm HT.)
 6. RENEW EXISTING 100mm SIDEWALK
 7. REMOVE EXISTING CATCHBASIN AND ABANDON LEAD
 8. INSTALL NEW CURB AND GUTTER INLET c/w CATCHBASIN 1800mm (SD-024) AND CONNECT TO EXISTING 300mm LDS
 9. INSTALL 150mm SUBDRAIN
 10. ADJUST EXISTING MANHOLE/CATCHBASIN TO GRADE
 11. REMOVE EXISTING FRAME AND COVER AND INSTALL NEW FRAME AND SOLID COVER (AP-006 AND AP-007)
 12. INSTALL NEW CAST IRON RISER RING
 13. ADJUST EXISTING WATER VALVE TO GRADE

AECOM
 Certificate of Authorization
 AECOM Canada Ltd.
 No. 4671 Date: Dec 5/19

METRIC
 WHOLE NUMBERS INDICATE MILLIMETRES
 DECIMALIZED NUMBERS INDICATE METRES

EXISTING	LEGEND - PLAN	PROPOSED	EXISTING	LEGEND - PLAN	PROPOSED	EXISTING	LEGEND - PROFILE	PROPOSED
150 mm W.M.	WATERMAIN	150 mm W.M.	---	HYDRO	---	---	⊙ PROFILE	---
⊙	HYDRANT	⊙	---	M.T.S.	---	---	⊙ WEST GUTTER	---
⊙	VALVE	⊙	---	CONCRETE	---	---	⊙ EAST GUTTER	---
---	LAND DRAINAGE SEWER	---	---	ASPHALT	---	---	---	---
---	WASTEWATER SEWER	---	---	PROPERTY LINE	---	---	---	---
⊙	MANHOLE	⊙	---	SURVEY BAR	---	---	---	---
⊙	CATCH BASIN	⊙	---	ELEVATION	(235.750)	---	---	---
⊙	CATCH PIT	⊙	---	TREE	---	---	---	---
---	JUNCTIONS	---	---	SIDEWALK RAMP	---	---	---	---
---	CULVERT	---	---	CONCRETE SIDEWALK	---	---	---	---
---	GAS	---	---	FENCE	---	---	---	---

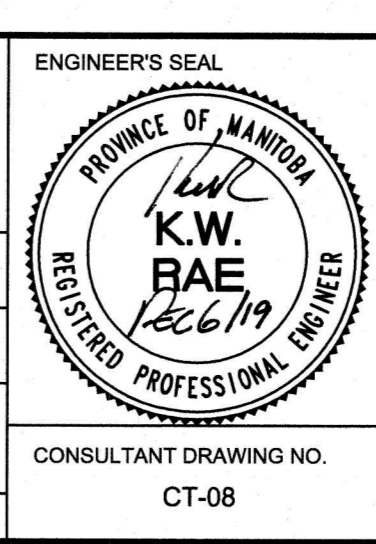
LOCATION APPROVED UNDERGROUND STRUCTURES

SUPV. U/G STRUCTURES COMMITTEE DATE

NOTE:
 LOCATION OF UNDERGROUND STRUCTURES AS SHOWN ARE BASED ON THE BEST INFORMATION AVAILABLE. BUT NO GUARANTEE IS GIVEN THAT ALL EXISTING UTILITIES ARE SHOWN OR THAT THE GIVEN LOCATIONS ARE EXACT. CONFIRMATION OF EXISTENCE AND EXACT LOCATION OF ALL SERVICES MUST BE OBTAINED FROM THE INDIVIDUAL UTILITIES BEFORE PROCEEDING WITH CONSTRUCTION.

NO.	REVISIONS	DATE	BY	DATE
0	ISSUED FOR TENDER	12/08/2019	BC	
A	ISSUED FOR REVIEW	04/04/2019	BC	

DESIGNED BY	SS	CHECKED BY	BC/KWR
DRAWN BY	SS	APPROVED BY	
HOR. SCALE:	1:250	RELEASED FOR CONSTRUCTION BY:	
VERTICAL:	1:10	DATE	Dec 5/19



THE CITY OF WINNIPEG
 PUBLIC WORKS DEPARTMENT
 ENGINEERING DIVISION

2019 LOCAL STREET RENEWAL PROGRAM

MCDOWELL DRIVE - WESTLUND WAY TO MCDOWELL DRIVE NORTH
 PAVEMENT RECONSTRUCTION
 STATION 0+100 TO STATION 0+210

CITY DRAWING NUMBER
 SHEET 08 OF 10